



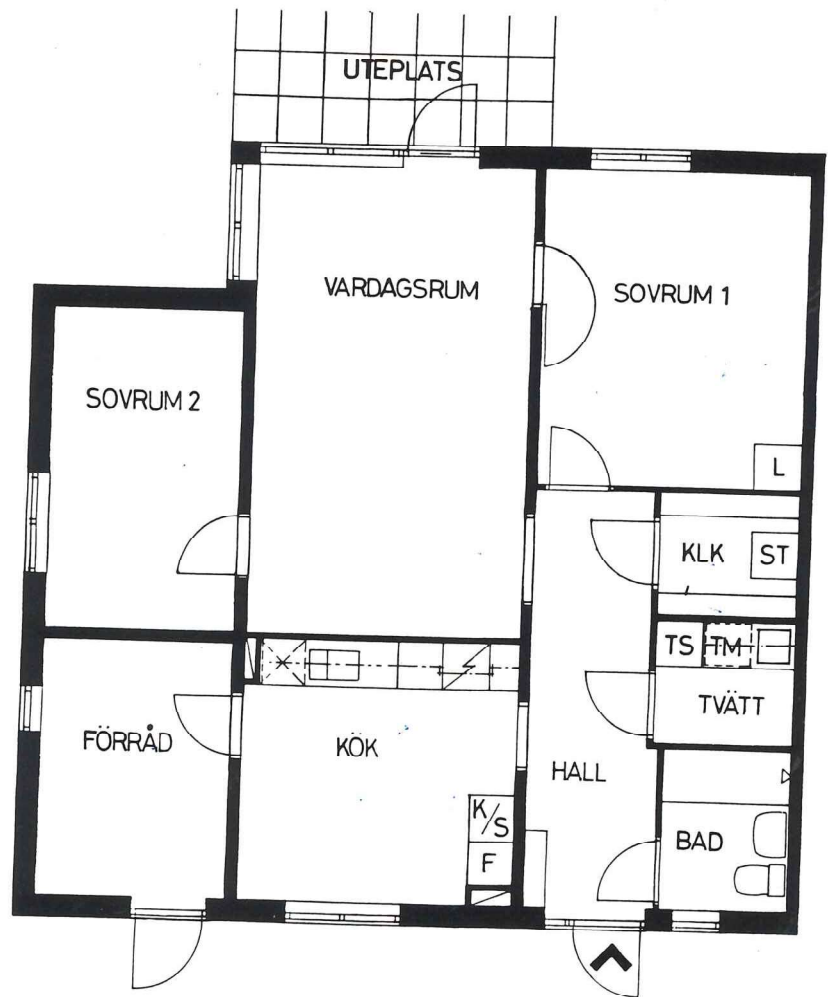


Teckenförklaring

- Frd = Förråd
- Klk = Klädkammare
- TM = Tvättmaskin
- ST = Städskåp
- L = Linneskåp
- G = Garderob
- K/S = Kyl/Sval
- F = Frysskåp

-  = Plats för diskmaskin
-  = Spis
-  = Lägenhets placering
-  = Spegelvänd lägenhets placering

Ex lgh. nr = 02:01  
 02 = husnummer  
 0 = våningsplan  
 1 = lgh.nummer

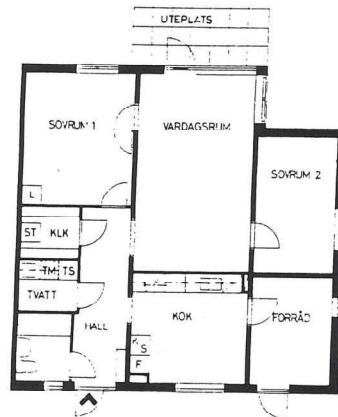


3 ROK

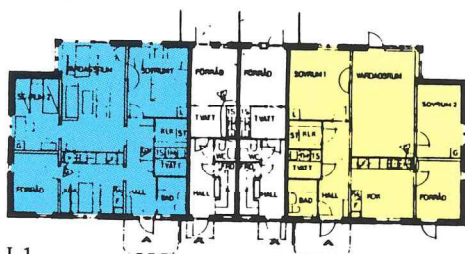
Lägenhet i hus L1, L3

Bostadsyta: **80,3 m<sup>2</sup>**  
 Förråd: 8,3 m<sup>2</sup>

Lgh.nr: 02:01, 04:01, 06:01,  
 07:01, 09:01, 10:01, 05:01  
 Spegelvända lgh.nr: 02:04,  
 04:04, 06:04, 07:04, 09:04,  
 10:04, 05:06



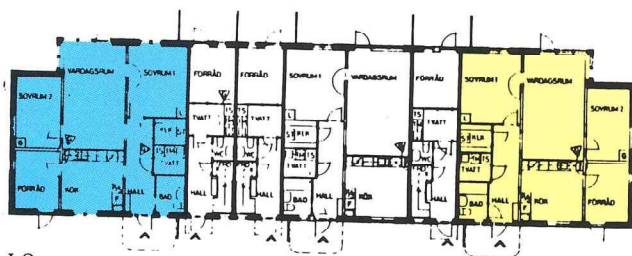
Spegelvänd lägenhet



L1



L1



L3



L3